

MOLD

Electromagnetic

Artificial frequencies do not SPIN and we DO! If it is man made it doesn't spin. Look at nature—it spins.

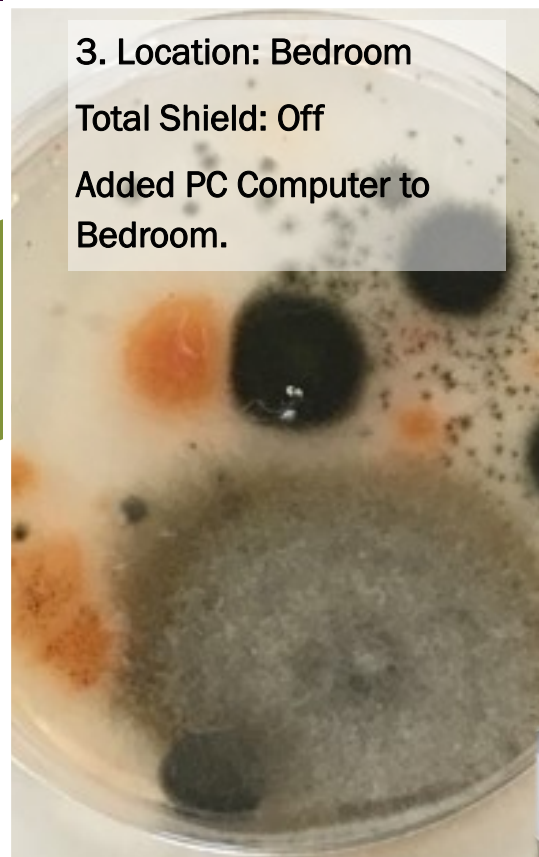
Test: Tested petri dishes in a bedroom with and without the Total Shield (TS) on.

Overview: I placed petri dishes in a bedroom closet that my meters picked up radio-waves, and dirty electricity. The second picture is with the TS on. The TS was placed in the living room. The third picture is with the TS off and we added a computer in the room.

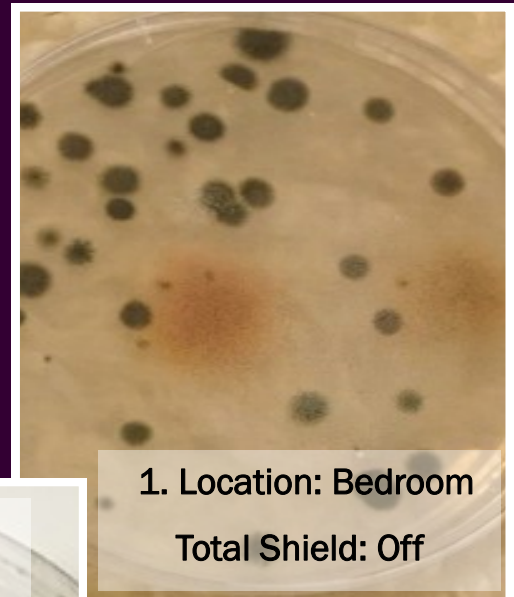
Conclusion: Clearly shows increased mold growth with the Total Shield off.

Mold Grows 600 times faster with EMFs. Indoor mold contaminants as well as other biotoxins (such as those found in Lyme Disease), are highly sensitive to electromagnetic fields. EMFs therefore easily step up neurotoxin production and have a major impact on the immune system.

~ Dr. D. Klinghardt



3. Location: Bedroom
Total Shield: Off
Added PC Computer to Bedroom.



1. Location: Bedroom
Total Shield: Off



2. Location: Bedroom
Total Shield: On



Total Shield interrupts and neutralizes electromagnetic fields, geopathic stress and other harmful waves in your home or office. It uses a Tesla-type coil to produce the Earth's natural field, and overcomes negative EMF fields. For geopathic stress, the unit detects and then amplifies waves, reversing them by 180 degrees and retransmitting them. This counteracts the harmful waves.

For more information visit:
HealthyBioSolutions.com
Janice Churchill
425-358-0611